

G3810S Stainless Steel Cabinet Lock

Features

- Nickel silver key with excellent corrosion and abrasion resistance.
- Durability with thick cam
- Reversible key can be removed when locked and unlocked (360° rotation)
- For drawer and cabinet door application
- Suitable for overlay doors
- 12 key changes available (max. 300 key changes on special request)
- Master key system available on request (300 key changes per master key)

Notes

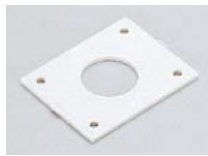
- Not waterproof

Parts Included

- Countersunk head wood screw 3.1×20, 2.1×10 (SUS)

Sold Separately

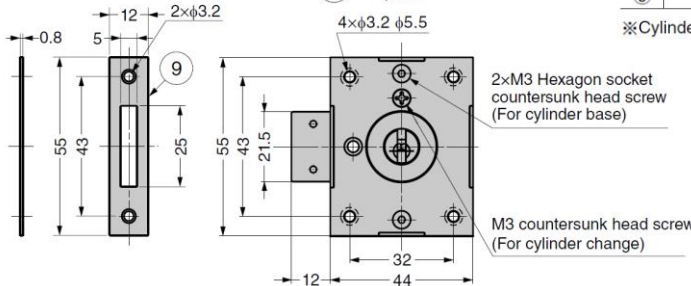
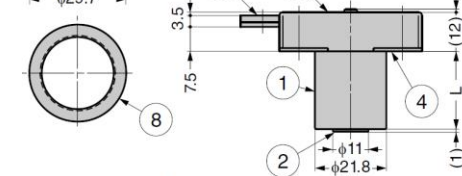
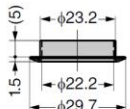
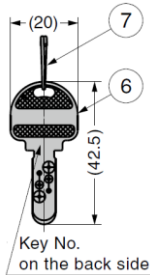
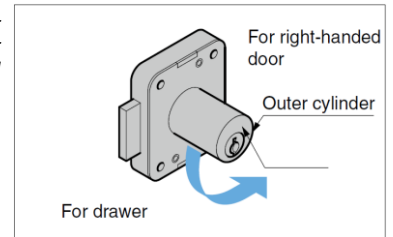
- Spacer **G6810-SP**



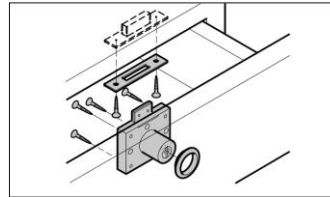
How to Switch: Drawer/Right-handed Door Application

Turn the outer cylinder to the position for drawer or right-handed door and then fix with screws.

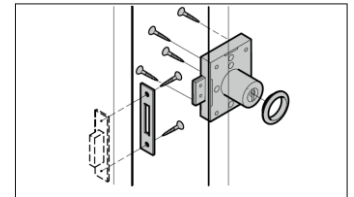
The logo is to be forwarded upside.



Installing to Drawers



Installing to Right-Handed Doors



No.	Part Name	Material	Finish
①	Cylinder (Outer)	Stainless Steel (SUS303)	Satin
②	Cylinder (Inner)		
③	Body	Stainless Steel (SUS304)	Plain
④	Cylinder Base		
⑤	Dead Bolt		
⑥	Key	Nickel Silver	
⑦	Key Ring	Stainless Steel (SUS304)	
⑧	Surface Ring		
⑨	Strike		

※Cylinder pin is made of brass.

Part No.	Key Type	Cylinder Diameter	Door Thickness	L
G3810S-24-B	Keyed Differently	21.8	24	24
G3810S-24-D	Keyed Alike			
G3810S-30-B	Keyed Differently		30	30
G3810S-30-D	Keyed Alike			